

THIS DRAWING IS UNPUBLISHED.

RELEASED FOR PUBLICATION APRIL , 2004.

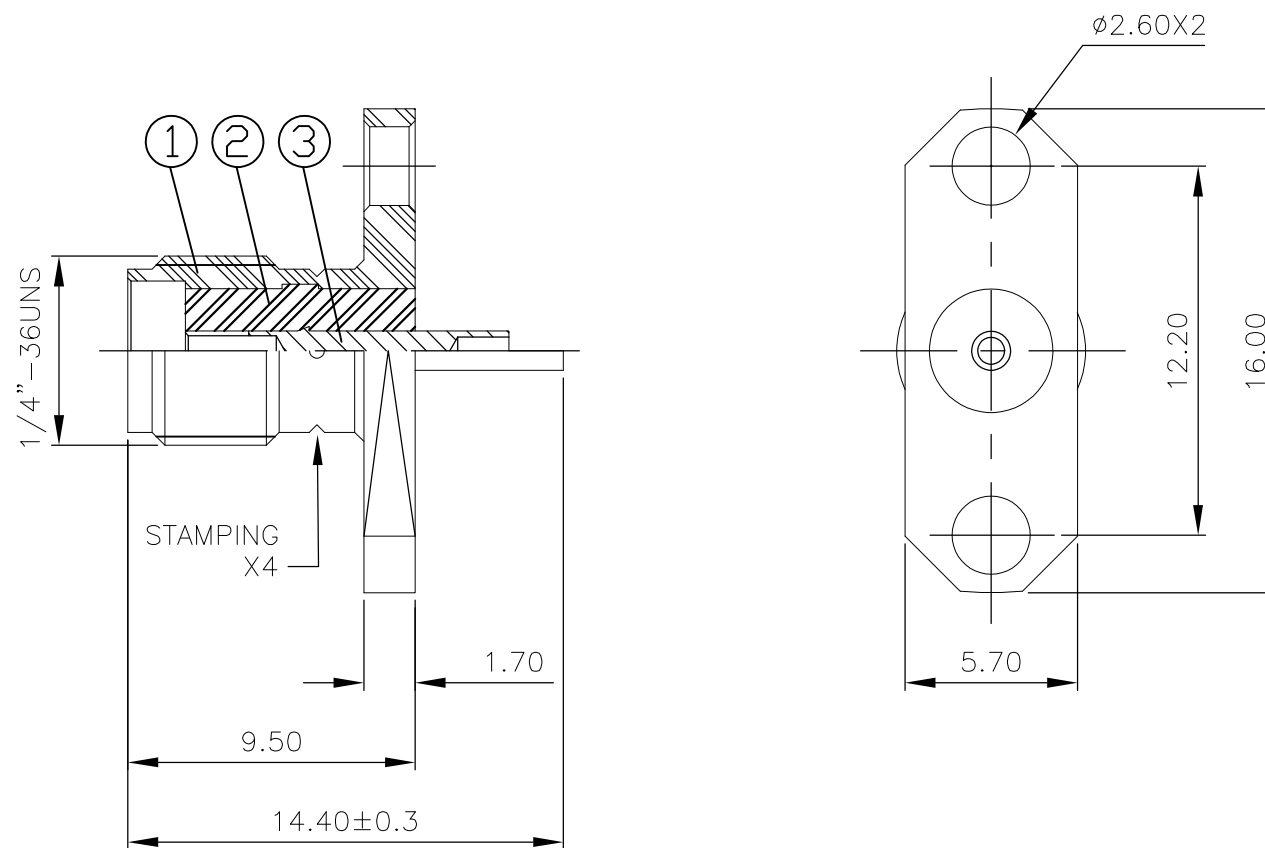
© COPYRIGHT 2004 By -

ALL RIGHTS RESERVED.

| LOC | DIST | REVISIONS | | | | | |
|-----|------|-----------|-----|---------------------------|---------|-----|------|
| E | B | P | LTR | DESCRIPTION | DATE | DWN | APVD |
| | | | A1 | REVISED PER ECO-11-005033 | 01APR11 | RK | HMR |

NOTES:

- 1 SINGLE PACK IN ACCORDANCE WITH SPEC 107-3275
- 2 100 TRAY PACK IN ACCORDANCE WITH SPEC 107-3275
- 3 0.08µm Au PLATING OVER 1.27µm Ni PLATING
- 4 0.08µm Au PLATING OVER 1.27µm Ni PLATING OVER 0.76µm Cu PLATING
- 5 0.76µm Au PLATING OVER 1.27µm Ni PLATING OVER 0.76µm Cu PLATING
- 6 PASSIVATED
- 7 WHITE BRONZE PLATING
- 8 FOR TECHNICAL DATA REFER TO YOUR LOCAL TE CONNECTIVITY SALES OFFICE
- 9 ALL DIMENSIONS ARE NOMINAL FOR REFERENCE ONLY UNLESS OTHERWISE STATED



| | | | | | | | | | | | |
|-------------------|------|------|------|------|------|------|------|------------------|---|---------------|------|
| 1 | 1 | 1 | 1 | 1 | 1 | 1 | 1 | BERYLLIUM COPPER | 5 | CENTER SOCKET | 3 |
| 1 | 1 | 1 | 1 | 1 | 1 | 1 | 1 | PTFE | | INSULATOR | 2 |
| 1 | 1 | - | - | - | - | - | - | BRASS | 7 | BODY | 1 |
| - | - | 1 | 1 | - | - | - | - | BRASS | 4 | BODY | 1 |
| - | - | - | - | 1 | 1 | - | - | STAINLESS STEEL | 6 | BODY | 1 |
| - | - | - | - | - | - | 1 | 1 | STAINLESS STEEL | 3 | BODY | 1 |
| 4--1 | 4--0 | 3--1 | 3--0 | 2--1 | 2--0 | 1--1 | 1--0 | MATERIAL | | DESCRIPTION | ITEM |
| 2 | 1 | 2 | 1 | 2 | 1 | 2 | 1 | | | | |
| QUANTITY PER ASSY | | | | | | | | PARTS LIST | | | |

| | | | | | |
|--|--|-----------------------------------|--|-------------------------|---------------|
| THIS DRAWING IS A CONTROLLED DOCUMENT. | | DWN R.SMITH 12FEB04 | STE TE Connectivity | | |
| DIMENSIONS: mm | | CHK S.PARLOW 12FEB04 | | | |
| TOLERANCES UNLESS OTHERWISE SPECIFIED: | | APVD F.WHEELER-KING 12FEB04 | NAME SMA STRAIGHT PANEL SOCKET RECEPTACLE 2 HOLE FLANGE SOLDER SPILL | | |
| 0 PLC ± - | | PRODUCT SPEC 108-3460 | SIZE A3 | | |
| 1 PLC ± - | | APPLICATION SPEC | CAGE CODE 00779 | DRAWING NO C-1478963 | RESTRICTED TO |
| 2 PLC ± - | | WEIGHT - | SCALE 1:1 | | |
| 3 PLC ± - | | | SHEET 1 OF 1 | | |
| 4 PLC ± - | | | REV A1 | | |
| ANGLES ± - | | | | | |
| FINISH - | | | | | |
| MATERIAL SEE TABLE | | | | | |
| | | CUSTOMER DRAWING | | | |